

# Greater Houston Partnership STATE OF EDUCATION

Underwritten by:



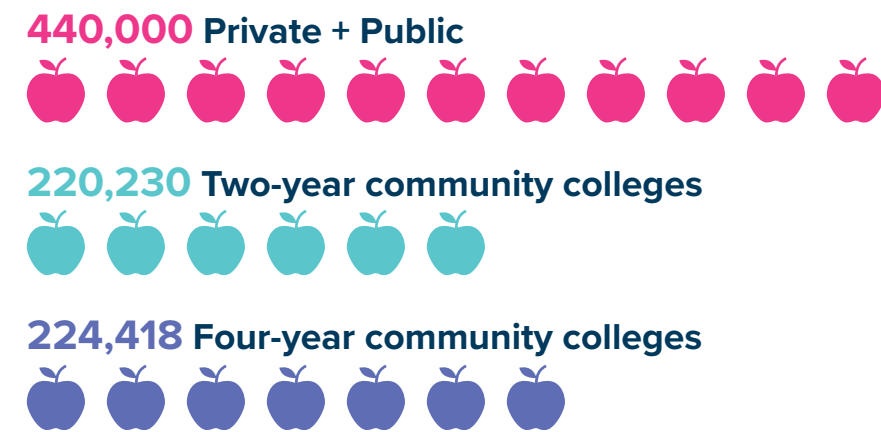
TEXAS A&M UNIVERSITY  
Education &  
Human Development

## HOUSTON HIGHER EDUCATION BY THE NUMBERS

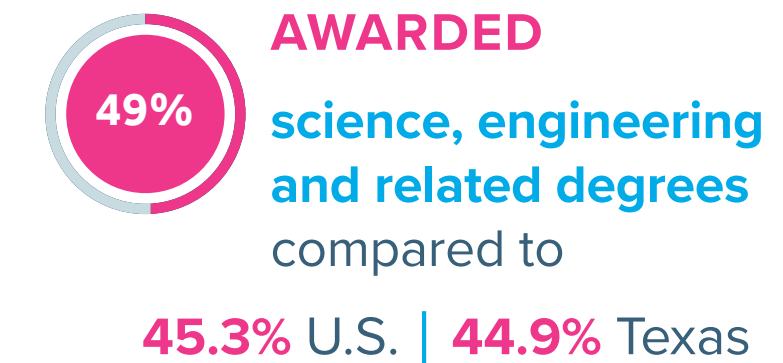
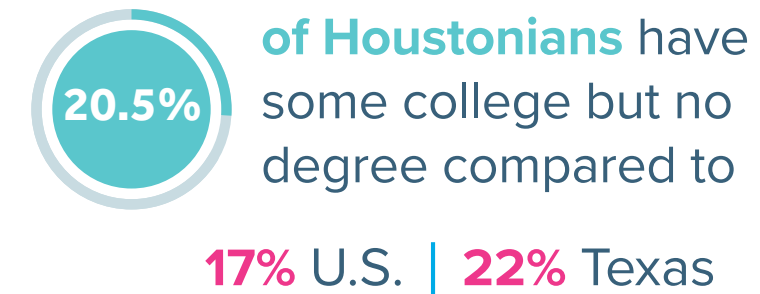
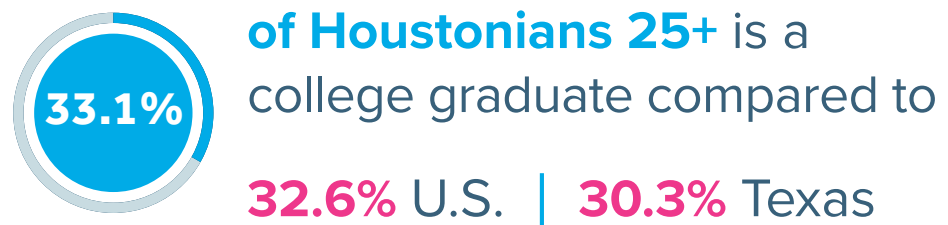
### Students enrolled

Fall 2019\*

\*Includes Texas A&M University in College Station and other colleges within 100 miles of Metro Houston

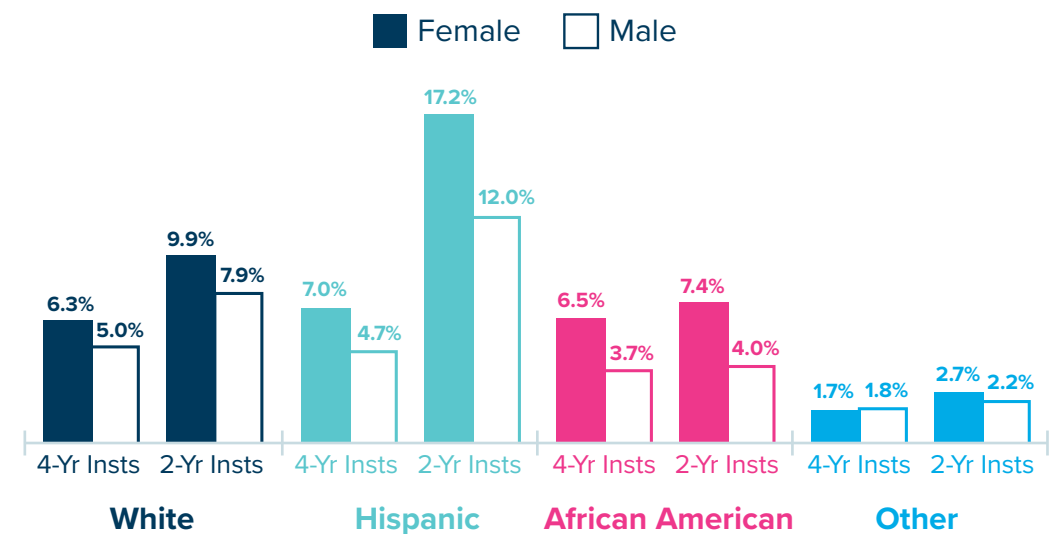


### 2018 Snapshot

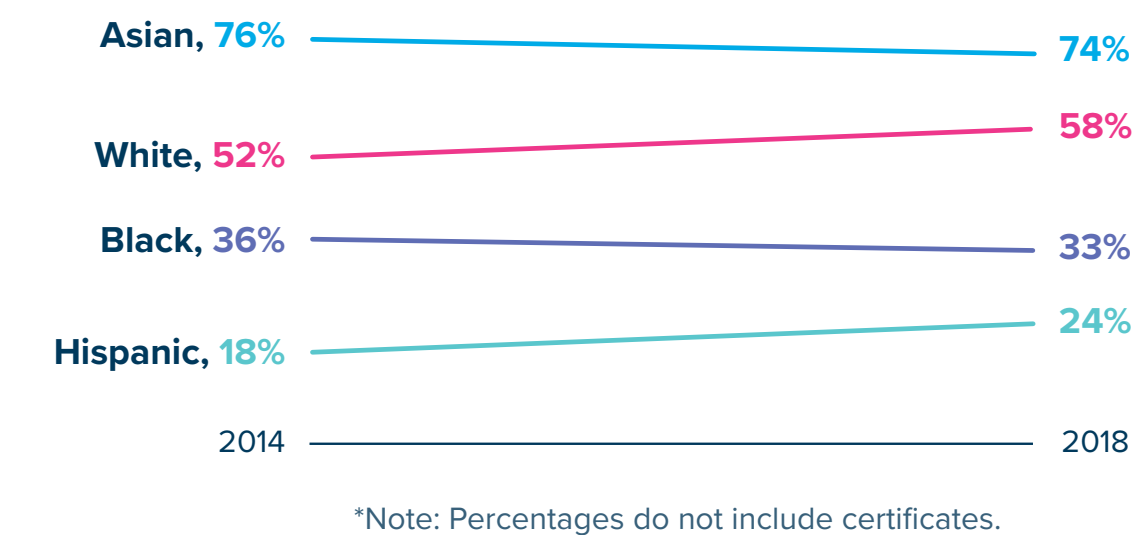


## STUDENT DEMOGRAPHICS FOR THE 13-COUNTY HOUSTON GULF COAST REGION

Percent of Total Public Higher Ed Enrollment by Gender and Race/Ethnicity, Fall 2018



Percentage of Population with Postsecondary Attainment, Age 25-34



## OPPORTUNITIES TO KEEP HOUSTON COMPETITIVE

### Retain graduates

Houston sends **19k of its 24k high school graduates** to non-Houston Higher Education Institutions (HEIs) - **26k**

**BUT** sees fewer non-Houston HEI graduates move to Houston post-graduation (**11k**)

compared to other TX metro areas

### Increase high-value, high-growth tech degree production

Houston currently ranked **16<sup>th</sup>** among national MSAs

**↑ to 10.6k** degrees within 10 years to be in top 10 MSAs

### SOURCES

National Center for Education Statistics, 2018 Report | U.S. Census Bureau, 2018 American Community Survey | Good Reason Houston, Data Dashboard, ACS 1-yr PUMS Data | WSJ's Where Graduates Move After College; Texas Higher Education Data, 2017; IPEDS, 2016-2017; BCG Analysis | Texas Higher Education Coordinating Board (THECB)